

MAKE WESTERN BLOT NORMALIZATION MORE ACCURATE

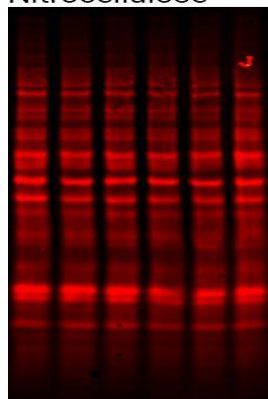
## REVERT™ Total Protein Stain

### 15% discount on THE FIRST PURCHASE

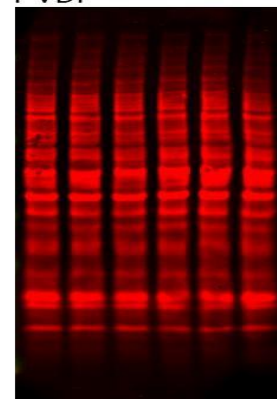
Make Western blot normalization more accurate and reliable with **REVERT Total Protein Stain**. This quick total protein normalization method detects all sample proteins after transfer from gel to membrane. The stain provides linear signal over a broad range of sample concentrations and is compatible with subsequent Western blot immunodetection methods.

**REVERT Total Protein Stain** works with your existing Western blot workflow, without needing any additional reagents or special gels. Staining takes less than ten minutes and is compatible with both PVDF and nitrocellulose membranes (Figure 1).

Nitrocellulose



PVDF



**Figure 1. Rapid staining with REVERT Total Protein Stain.** REVERT Total Protein Stain provides highly efficient protein staining on nitrocellulose or Immobilon®-FL PVDF membranes in under 10 minutes. 10 µg of Jurkat cell lysate was loaded in each lane and separated in 4-12% NuPAGE Bis-Tris gels, transferred to nitrocellulose or PVDF membrane, and then imaged with the Odyssey® CLx Imaging System in the 700 nm channel.

Ref.	Description	PVP
926-11010	REVERT Total Protein Stain Kit	190,68 €
926-11011	REVERT Total Protein Stain Solution, 100 mL	136,54 €

If you don't know our REVERT yet , contact to [pedidos@sgsh.es](mailto:pedidos@sgsh.es) and get a **Free Sample** .

Sample Pack(926-11014)	REVERT Total Protein Stain, 20 mL
	REVERT Wash Solution, 40 mL
	REVERT Reversal Solution, 40 mL

**Oferta válida hasta 31 de diciembre de 2017**

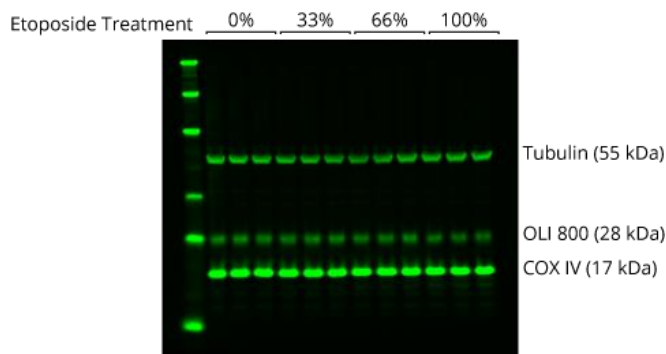
**SG Servicios Hospitalarios, SL**

Telf. 93 284 97 77 Fax 93 284 43 [pedidos@sgsh.es](mailto:pedidos@sgsh.es) [www.sgsh.es](http://www.sgsh.es)

## Odyssey® Loading Indicators ASK FOR A FREE SAMPLE

Odyssey Loading Indicators (OLI) provide a simple, convenient method to evaluate the consistency of sample loading volume across gel lanes, as well as the uniformity of Western blot transfer. Each Odyssey Loading Indicator is a single 28 kDa recombinant protein directly labeled with a near-infrared fluorescent dye. You can detect the 700 nm version of OLI in the 700 nm channel of your imaging system and the 800 nm version of OLI in the 800 nm channel.

### (A) OLI and Housekeeping Proteins



**Figure 1. Detection of OLI 800.** (A) Odyssey Loading Indicator (OLI) was detected simultaneously with the housekeeping proteins COX IV and tubulin in the 800 nm channel with the [Odyssey CLx](#) imaging system.

Contact to [pedidos@sgsh.es](mailto:pedidos@sgsh.es) and get a **Free Sample**.

Ref.	Description
Sample (926-20012, 926-20014)	Odyssey 28kD Loading Indicator, 700nm or 800 nm, 100µL, sufficient for 20 lanes at 5µL per lane

**Oferta válida hasta 31 de diciembre de 2017**

**SG Servicios Hospitalarios, SL**

Telf. 93 284 97 77 Fax 93 284 43 [pedidos@sgsh.es](mailto:pedidos@sgsh.es) [www.sgsh.es](http://www.sgsh.es)