

SPECIALIZING IN

## Secondary **Antibodies** and **Conjugated**



### **Alexa Fluor® Conjugated Secondary Antibodies**

Alexa Fluor® conjugates are widely recognized as superior fluorescent dyes. Teamed with Jackson ImmunoResearch AffiniPure™ secondary antibodies, the brightest signals can be achieved.

#### **Alexa Fluor® 488 Donkey Anti-Rabbit IgG (H+L)**

**(min X Bov, Ck, Gt, GP, Sy Hms, Hrs, Hu, Ms, Rat, Shp Sr Prot)**

- 302 validated CiteAb citations
- Highly cross-adsorbed
- Suitable for multiple labeling



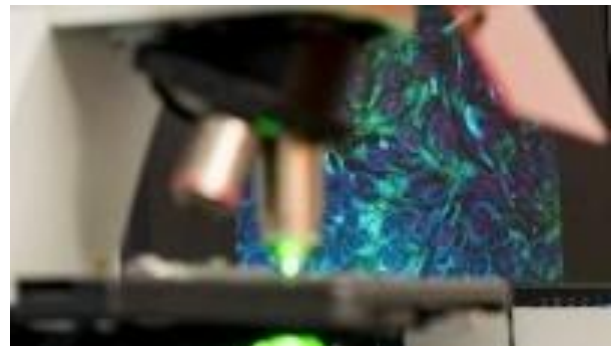
**Contact to SG Servicios Hospitalarios, S.L [pedidos@sgsh.es](mailto:pedidos@sgsh.es) for any information and prices of Jackson Immunoresearch products.**

## SPECIALIZING IN Secondary **Antibodies** and **Conjugated**

### Alexa Fluor® 647 Donkey Anti-Mouse IgG (H+L)

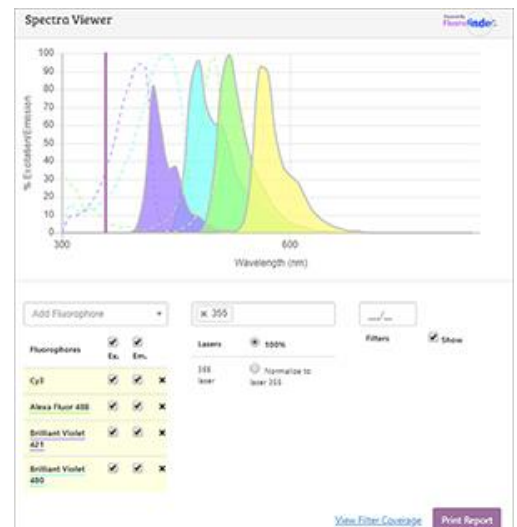
(min X Bov, Ck, Gt, GP, Sy Hms, Hrs, Hu, Rb, Shp Sr Prot)

Image using the far red channel with JIR's Alexa Fluor® 647 conjugates. Suitable for IHC, fluorescent western blotting, ELISA and flow cytometry



### Building dye panels with Alexa Fluor® 594 conjugates

Alexa Fluor® 594 gives you options in the yellow channel. Build and optimize your dye panels with JIR's spectra viewer.



**Contact to SG Servicios Hospitalarios, S.L [pedidos@sgsh.es](mailto:pedidos@sgsh.es) for any information and prices of Jackson Immunoresearch products.**